



**ALASKA DIVISION OF HOMELAND SECURITY &
EMERGENCY MANAGEMENT**
SITUATION REPORT 24-067 • March 7, 2024



Toll-Free 1.800.478.2337

Anchorage Area 907.428.7000

SEOC 907.428.7100

<p><u>SEOC Preparedness Level</u> Level 1 – Routine Operations.</p>	<p align="center">http://ready.alaska.gov</p>	<p><u>National Terrorism Advisory System:</u> Read the NTAS Bulletin here</p>
<p><u>Maritime Security (MARSEC)</u> Level:1- Minimum Appropriate Security Measures</p>	<p>WHO Novel Coronavirus Pandemic (COVID-19): 2019 Novel Coronavirus</p>	<p><u>Alaska Military Installation Force Protection Level:</u> FPCON Bravo</p>

(Significant changes from previous situation reports are red.)

Significant Issues:

Savoonga Low Walrus Harvest and Food Shortage

Yesterday, SEOC received a Declaration of Economic Disaster Due to Low Walrus Harvest, Dated October 2, 2023, from the City of Savoonga. The acting mayor of Savoonga believes the resolution was not forwarded correctly when it was signed. Low harvest circumstances are unchanged, and SEOC is engaged in assisting the community.

The SEOC spoke with and forwarded Savoonga 's Economic Disaster Declaration to the Department of Commerce and Community Development and the Department of Fish and Game for review and assistance. The SEOC also reached out to Alaska Voluntary Agencies Active in Disasters (AK VOAD) regarding Savoonga' s request for food assistance. AK VOAD will work with the SEOC, other feeding partners, and the City of Savoonga to develop a plan for food assistance.

Kotzebue – Frozen Water Lines

SEOC disaster assistance team will be returning from Kotzebue today.

Alaska X and Vigilant Guard Exercises

SEOC continues to participate in the Alaska X and Vigilant Guard exercises this week, testing Alaska's disaster response capabilities.

State of Alaska Department of Health (DOH)

The DOH stands ready to assist with all aspects of public health and, in the event of a public health emergency, is supported by the SEOC and other state departments as required. For current information, see: <https://health.alaska.gov/dph/Pages/default.aspx>
<https://health.alaska.gov/dph/Emergency/Pages/prepared/default.aspx>

NTAS Bulletin

The U.S. Department of Homeland Security issued an updated National Terrorism Advisory Bulletin on May 24, 2023. The current and expired bulletins can be viewed at the below link.

<https://www.dhs.gov/national-terrorism-advisory-system>

Travel Alerts and Conditions

For current driving conditions, dial 511 or visit: <https://511.alaska.gov/>

Barry Arm Landslide / Tsunami Risk

For the latest information on the Barry Arm Landslide and Tsunami risk, click here: <https://dggs.alaska.gov/hazards/barry-arm-landslide.html>

Earthquakes

United States Geological Service (USGS) Earthquake Information: <http://earthquake.usgs.gov/>
National Tsunami Warning Center: <http://tsunami.gov/>

Alaska Volcanoes

Great Sitkin Alert Level: Watch and Aviation Color Code: **Orange**
Shishaldin Alert Level: Advisory and Aviation Color Code: **Yellow**

For Alaska Volcano updates, go to: <https://www.avo.alaska.edu/>

Air Quality Index (AQI) Advisories

For the most up-to-date Air Quality Index Advisories:
<http://dec.alaska.gov/Applications/Air/airtoolsweb/Home/Index>

Spills of Oil and Hazardous Substances

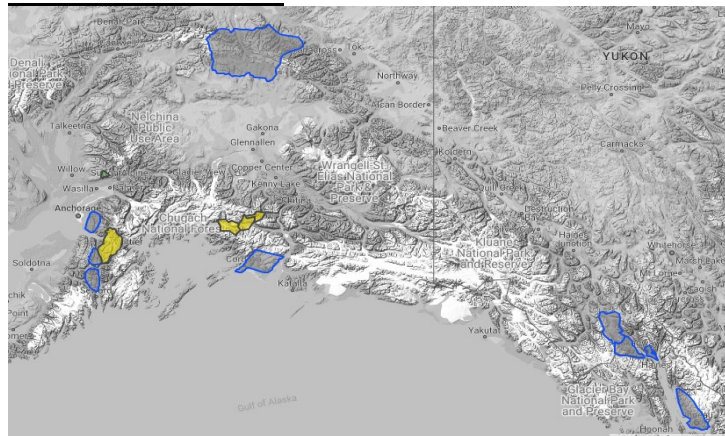
The Alaska Division of Environmental Conservation (ADEC) Spill Prevention and Response page is located at:
<https://dec.alaska.gov/spar/>

Alaska Cyber Security Information

State Employees may sign up for cybersecurity notifications and alerts at
<https://oit.alaska.gov/security>

Cybersecurity and Infrastructure Security Agency (CISA)-Cybersecurity Services and Tools:

Avalanche Hazard

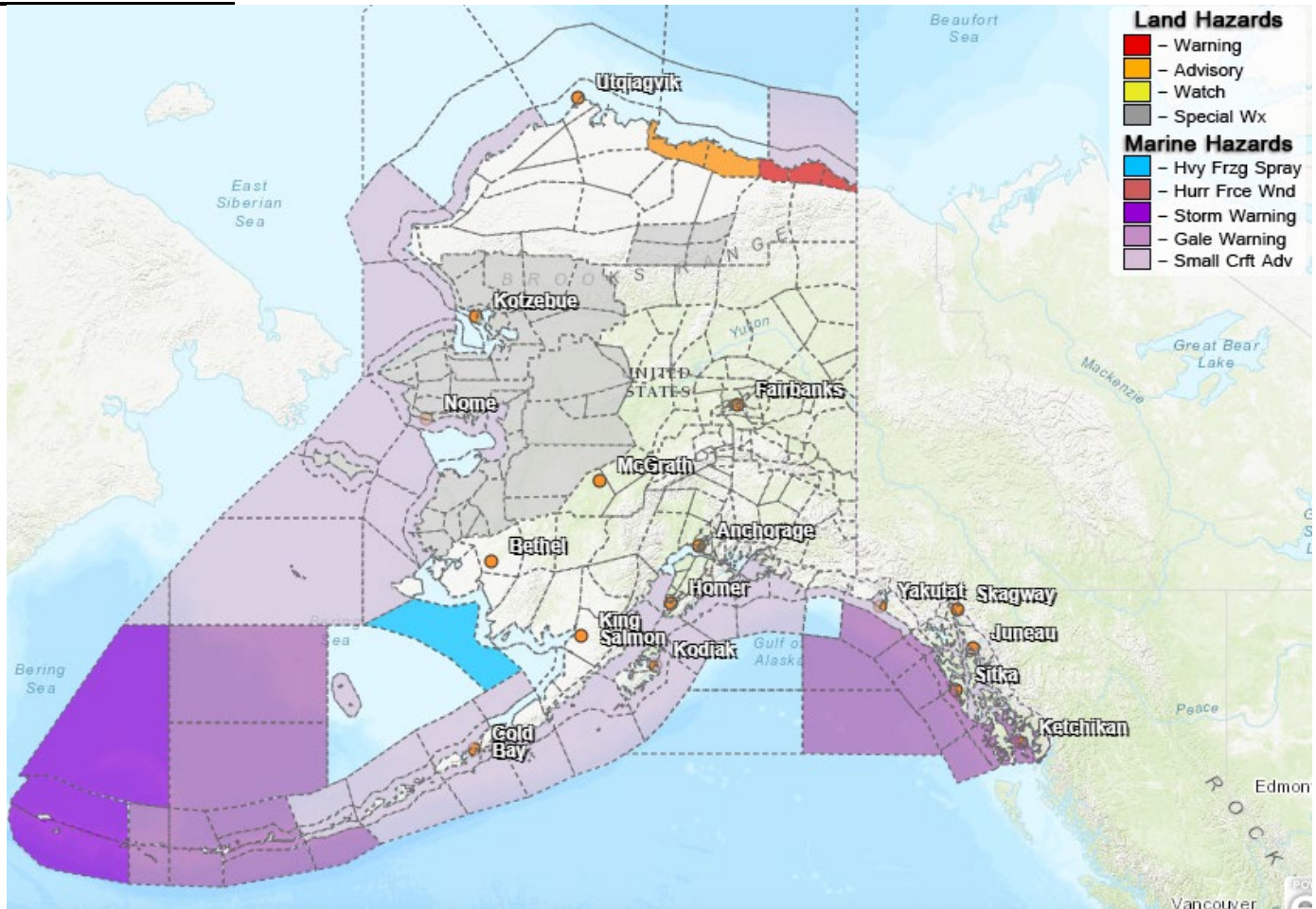


Travel in avalanche terrain is not recommended. Avoid being on or beneath all steep slopes.

Valdez- moderate avalanche danger at all levels

For information and the most current avalanche conditions, go to <https://alaskasnow.org>

Significant Weather:



Special Weather Advisory

- South Slopes of the Western Brooks Range; Noatak Valley; Kivalina and Red Dog Dock; Lower Kobuk Valley; Baldwin Peninsula; Northern Seward Peninsula; Upper Kobuk Valleys; Shishmaref; Bering Strait Coast; Southern Seward Peninsula Coast; Interior Seward Peninsula; Eastern Norton Sound and Nulato Hills; Yukon Delta Coast; Lower Yukon River; St Lawrence Island; Lower Koyukuk Valley; Middle Yukon Valley; Lower Yukon and Innoko Valleys

Wind Chill Warning

- Central, and Eastern Sea Coast

For more information and the most current weather, Watches / Warnings / Advisories go to: <https://www.weather.gov/arh/>

The Next Situation Report will be **March 8, 2024**. A significant change in the situation or the threat level will prompt an interim report. This report is posted on the internet at <https://ready.alaska.gov/sitrep>.

To register for email distribution, go to <http://list.state.ak.us/mailman/listinfo/dhsem.situation.report>. Direct questions regarding this report to the SEOC at 907-428-7100 or seoc@alaska.gov.

